

Water Levels Spring 2019

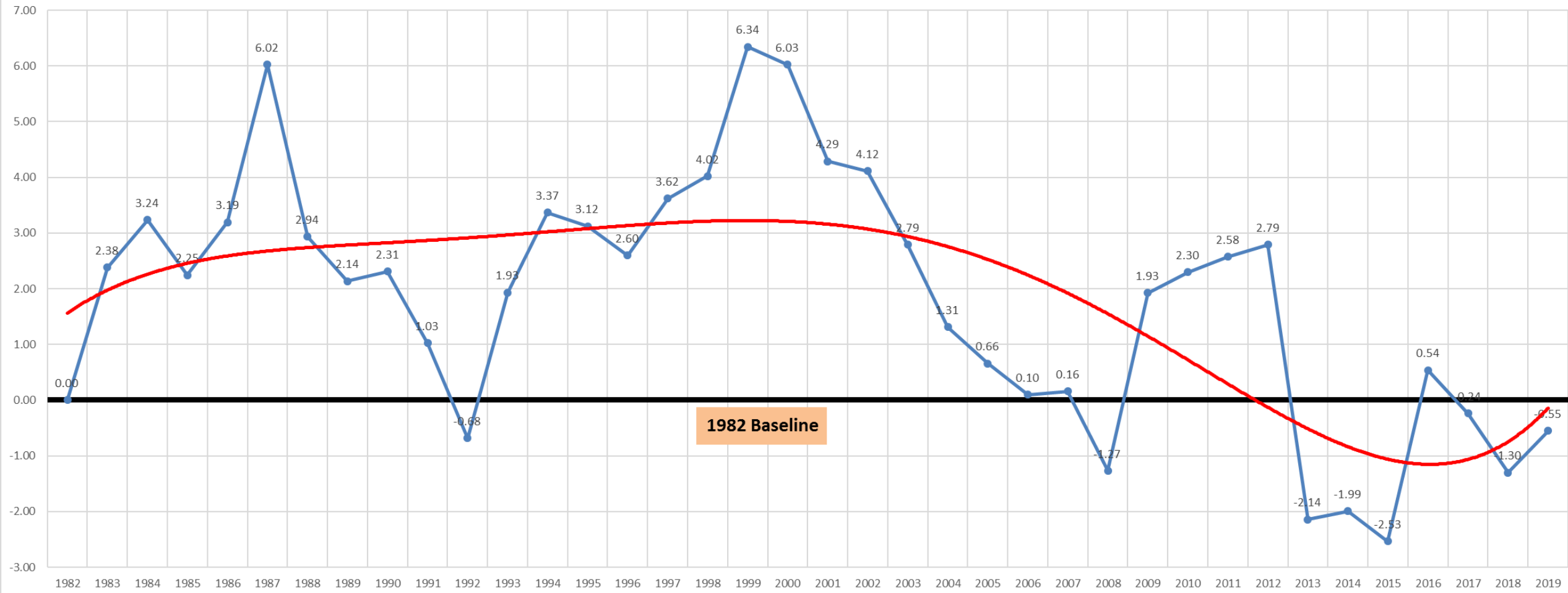
Monitoring Wells:
Spring '18 to '19 - **1.34**
Baseline to Spring '18 - **0.46**

Water Levels

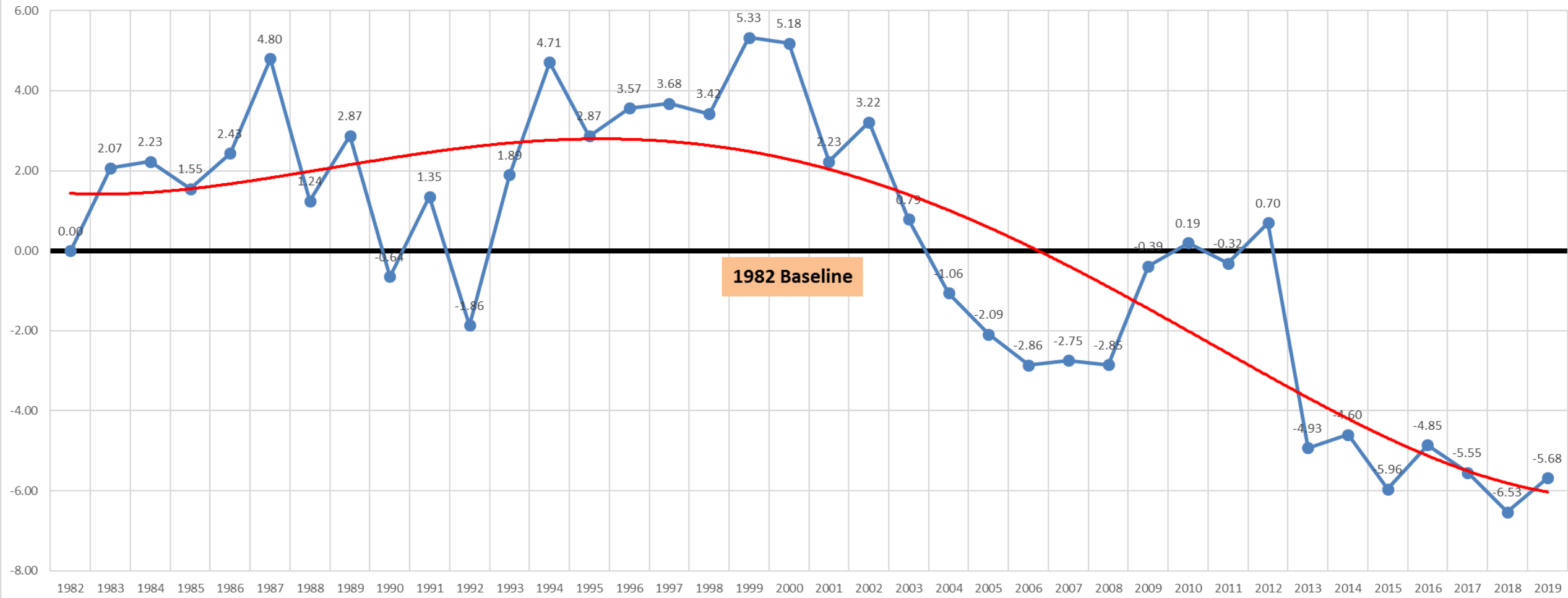
<u>County</u>	<u>Wells</u>	<u>Spring 2018 to Spring 2019</u>
Gage	27	1.04
Jefferson	24	0.86
Saline	42	1.39
<hr/>		
District Ave.	93	1.15

<u>County</u>	<u>Wells</u>	<u>Fall 2018 to Spring 2019</u>
Gage	27	2.18
Jefferson	24	2.97
Saline	42	2.77
<hr/>		
District Ave.	93	2.54

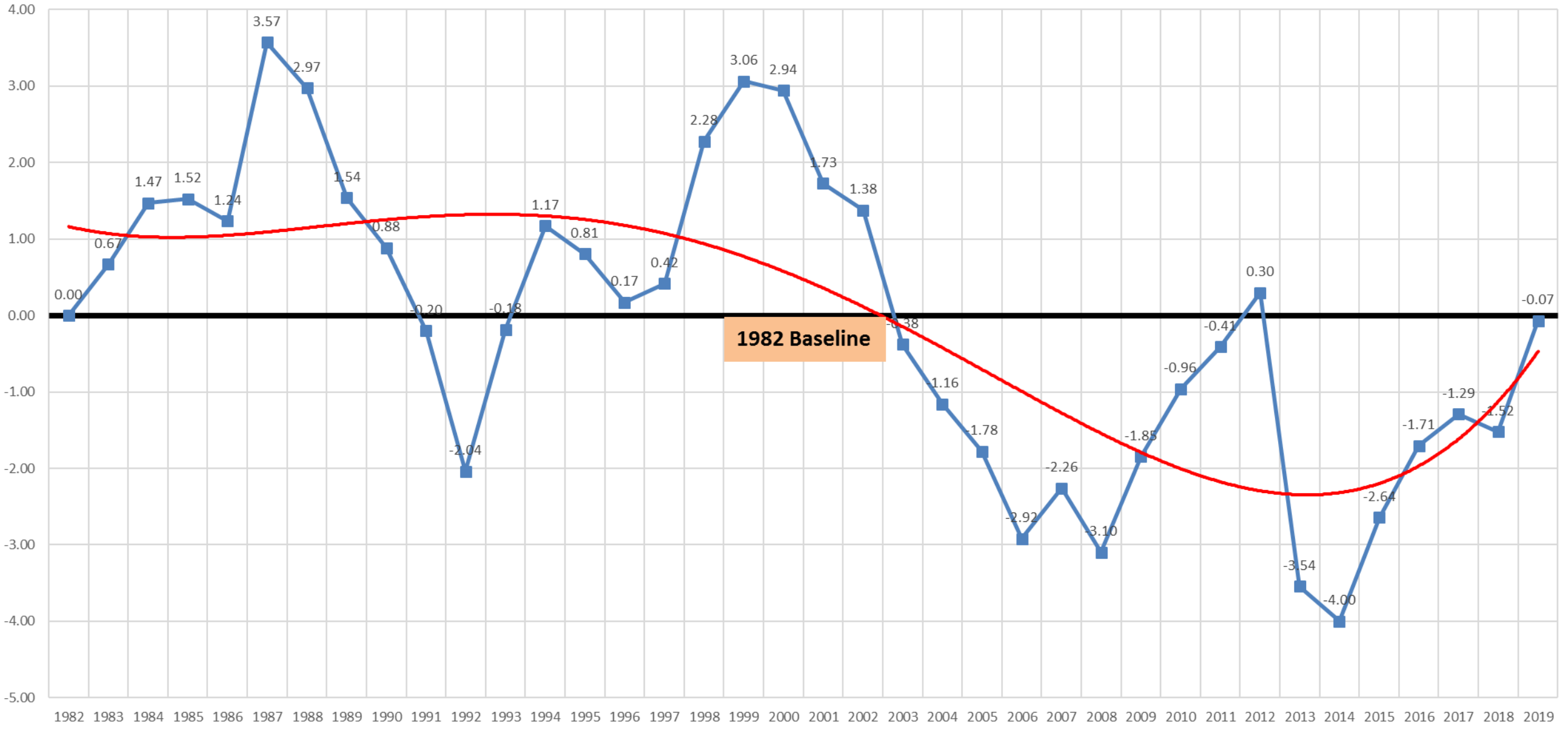
Gage County Level from 1982 Spring Baseline



Jefferson County Level from 1982 Spring Baseline



Saline County Level from 1982 Spring Baseline



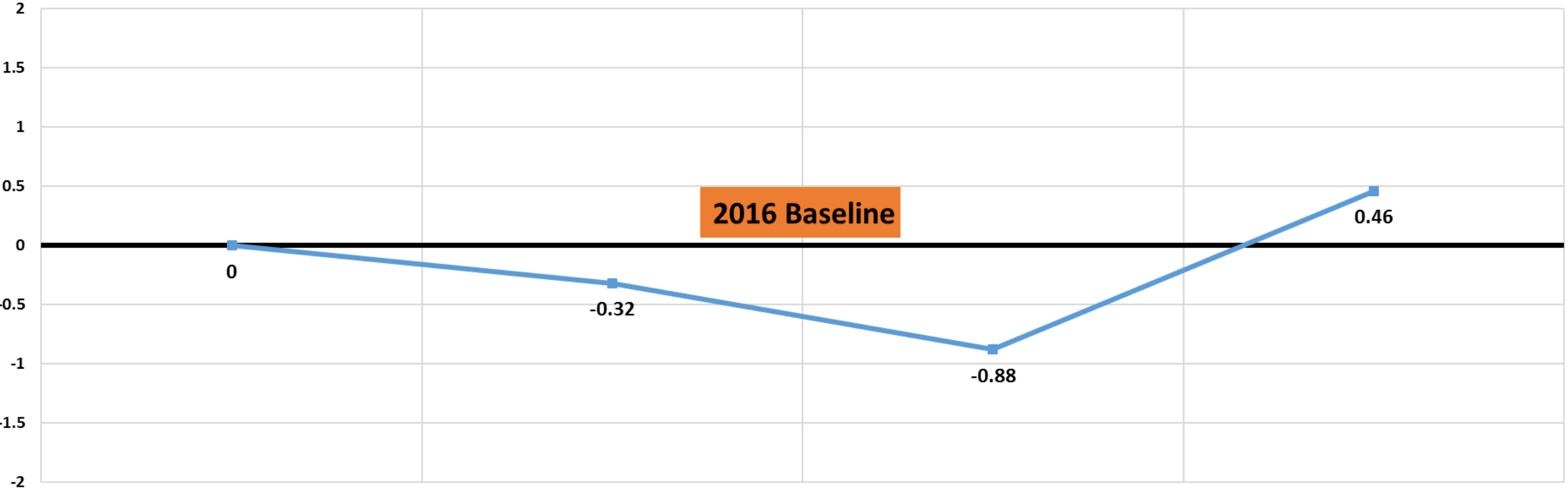
Dedicated Monitoring Well Static Water Level Average From Baseline

2016

2017

2018

2019



2016 Baseline

0

-0.32

-0.88

0.46

